



April 25, 2024

# WHITE STADIUM COMMUNITY MEETING: DESIGN PRINCIPLES

*Hosted by Public Facilities Department, Boston Public Schools, Boston Planning and Development Agency, and Boston Unity Soccer*

CITY of BOSTON

# Zoom Interpretation Services

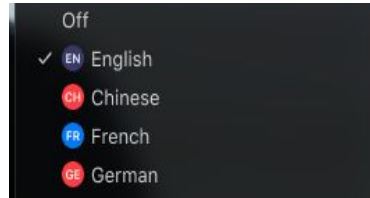
## Spanish: Para traducción en Español,

1. Vaya a la parte baja de la pantalla, en la barra horizontal, y presione la tecla "Interpretation".
2. Luego seleccione el idioma que desea escuchar.
3. Después de seleccionar, usted entrará a la reunión en el idioma "Español".



## Haitian Creole: Pou entèpretasyon Kreyòl ayisyen,

1. Ale nan kontwòl ba nan pati anba ekran an epi Like sou "Interpretation."
2. Apre sa, like sou ling ke ou ta renmen tande a.
3. Kounye a ou gen aksè a reyinyon an Kreyòl ayisyen.



## Cabo Verdean Creole: Gossim bu ta entra na reuniao na kriolu,

1. Bai na barra de controlo horizontal na parte inferior di computador bu kalka na "Interpretation".
2. Depos kalka na idioma qui bu kre ovi.
3. Agora dja bu sta ta entra na reunião em creole.

# COMMUNITY GUIDELINES

---

- For all participants:
  - **Maintain respect for others in this space.**
  - **Use “I” statements and share if you are representing a neighborhood association or group.**
  - **Limit your comments to two minutes**
  - **Give and take air time.**
  - **Let’s focus on the topic of the meeting**
  - **We’ll open the chat during discussion periods**
- For the project team:
  - We will collect and review your feedback from questions during discussion.
  - We will answer as many questions in the chat as we can.
  - If your comments are not addressed during the discussion, please reach us at [white.stadium@boston.gov](mailto:white.stadium@boston.gov)



# OUR ENGAGEMENT SCHEDULE

## WHITE STADIUM VIRTUAL COMMUNITY ENGAGEMENT SCHEDULE

### NEIGHBORHOOD TRANSPORTATION WORKSHOP

Roxbury | Tues, Apr 9 | 6-7:30 p.m.  
Dorchester | Wed, Apr 10 | 6-7:30 p.m.  
Jamaica Plain | Wed, Apr 10 | 7:30-9:00 p.m.


### DESIGN MEETINGS

Meeting #1: Design Principles | Thurs, Apr 25 | 6-7 :30 p.m.  
Meeting #2: Revised Principles, Program & Usage Needs |  
Wed, May 8 | 6-7:30 p.m.  
Meeting #3: Final Design: Bringing Principles, Program & Usage  
Needs Together | Wed, May 22 | 6-7:30 p.m.

### IAG MEETINGS

Meeting #2: Design Process & Transportation | Wed, May 15 | 6-7:30 p.m.  
Meeting #3: Community Benefits | Wed, Jun 5 | 6-7:30 p.m.

Learn more and register  
[boston.gov/white-stadium](https://boston.gov/white-stadium)

CITY of BOSTON  City of Boston  
Community  
Engagement



# AGENDA

|   |   |
|---|---|
| <b>Welcome &amp; Introductions:</b>     | <p><b>The City of Boston</b><br/>Dion Irish, Chief of Operations</p> <p><b>The Boston Planning and Development Agency (BPDA),</b><br/>Diana Fernandez, Deputy Chief of Urban Design for the BPDA</p> <p><b>Boston Unity Soccer</b><br/>Jennifer Epstein, Boston Unity Partner</p> |
| <b>What we have heard:</b>              | <p><b>The City of Boston Operations Cabinet,</b> Morgan McDaniel, Deputy Chief of Operations</p>  |
| <b>The Franklin Park Action Plan:</b>   | <p><b>Boston Parks and Recreation Department,</b><br/>Liza Meyer, Chief Landscape Architect</p>   |
| <b>The Playstead Design Principles:</b> | <p><b>Reed Hilderbrand,</b><br/>John Kett, Managing Principal at Reed Hilderbrand</p>   |
| <b>Discussion &amp; Feedback:</b>       | <p><b>The Boston Planning and Development Agency (BPDA),</b><br/>Diana Fernandez, Deputy Chief of Urban Design for the BPDA</p>   |
| <b>Design Evolution</b>                 | <p><b>Stantec and Jones Architecture,</b> Tamara Roy (Stantec), Christopher Bridle (Stantec), Dan Ollila (Jones Architecture), and Michelle Crowley (Crowley Cottrell)</p>  |
| <b>Question &amp; Answer</b>            | <p><b>The Boston Planning and Development Agency (BPDA),</b><br/>Diana Fernandez, Deputy Chief of Urban Design for the BPDA</p>   |
| <b>Next Steps</b>                       | <p><b>The City of Boston Operations Cabinet,</b> Morgan McDaniel, Deputy Chief of Operations</p>  |



# WELCOME & INTRODUCTIONS



# PROJECT OVERVIEW

Why Pursue This Opportunity?

# PROJECT OVERVIEW

## Renovating White Stadium Has Been Discussed For Decades, Without Any Outcomes.

1970

### White Stadium Cost: \$5 Million

The Boston Redevelopment Authority yesterday proposed conversion of White Stadium as a site for the Patriots after Harvard again rejected the pro football club's request to use Harvard Stadium. Details of the B.R.A. plan are:

**PRICE** — Knowledgeable people who have inspected the facility say it can be enlarged to 50,000 seats for less than \$5 million.

They point out that in the past two years, Tampa, Fla., and Memphis, Tenn., have constructed football stadiums seating in the vicinity of 50,000 for less than \$4 million. The \$5 million repair job at White Stadium would be the first stadium proposal in this area for less than \$25 million.

**FINANCING** — The money necessary for the

enlargement could come either through public or private financing. The Boston Redevelopment Authority could float a bond issue covering the cost of rebuilding White Stadium. The B.R.A. would back up the bonds with a long term lease from the Patriots, guaranteeing a certain rental figure per year.

For example, if a bond of \$4 million were floated over 30 years, the Patriots would sign a lease guaranteeing \$150,000 per year. Over 20 years this would run to \$4.2 million.

Further revenues could be derived from concessions and other rentals. **USAGE** — Since it was opened in 1947, the 10,919-seat White Stadium has been used for the

schoolboys for football track.

Exponents of a larger White Stadium plan which would turn the track facility Astro-Turf field, turf, or some other artificial surface, would the schoolboys, and prove to use the without any fear playing surface ruined.

PROPOSAL, Page 1.

2000



GLOBE STAFF PHOTO/GEORGE RUZZI

Kenneth Still, the new athletic director for Boston's public schools, at White Stadium. "I can remember this whole side of the stadium... cheering on a track team," he says.

JAMAICA PLAIN

### Man with a dream: filling those empty seats at White Stadium

1990

Many benches in the stands are broken.

A closeup of one of the broken benches.

FRANKLIN PARK

### Young athletes still await stadium's rehab

City's promised \$2m renovation of Hub students' sports facility delayed since 1984

2013

LOCAL NEWS

July 2nd, 2013

### Proposal to renovate Franklin Park's White Stadium draws favorable reaction

Martin Desmarais

2015

### A plan to restore Franklin Park's jewel

WALKER

Continued from Page B1

Fish said he will kick off the fund-raising campaign with \$5 million out of his pocket, as he did when he began Boston Scholar Athletes. Mayor Thomas M. Menino has endorsed the plan and the city's financial commitment to it. Fish said he believes the business community will be eager to invest in the project as well, that they simply haven't been approached.

The stadium and community center is a small but important investment, Fish said, in Boston's youth.

"It's about our future," he said. "We are the first genera-

Its current condition was summed up by a rusted padlock.

tion to leave the world worse off than we found it. This is a little stop in doing something about that. White Stadium will stay the way it is for the next 20 years if we don't do something about it."

Adrian Walker is a Globe columnist. He can be reached at [walker@globe.com](mailto:walker@globe.com). Follow him on Twitter @Adrian\_Walker.



LAURIE SWOPE FOR THE BOSTON GLOBE/FILE 2003

Fundraising for a \$45 million project to return White Stadium to its former glory is set to kick off on Wednesday.

Past plans have never succeeded at finding the right combination of funding, partnership, and public benefits that prioritizes city residents.



Public Facilities



CITY of BOSTON

Mayor Michelle Wu



# PROJECT OVERVIEW

Benefits of a Public-Private Community Partnership for Franklin Park as a whole.

- Deliver **higher quality amenities and programs** than the City could on its own
  - Sustainable maintenance partner to preserve investments
  - Outdoor and indoor amenities: high quality field, 400M track, athletic hub with public amenities
- Create new **pathways to prosperity**
  - New jobs at all construction stages
  - MWBEs and local business opportunities
  - Community Benefits Fund
- Build on the ongoing implementation of the **Franklin Park Action Plan**
- Provide **support for other large events** at the park



# PROJECT OVERVIEW

## Sample Future Schedule

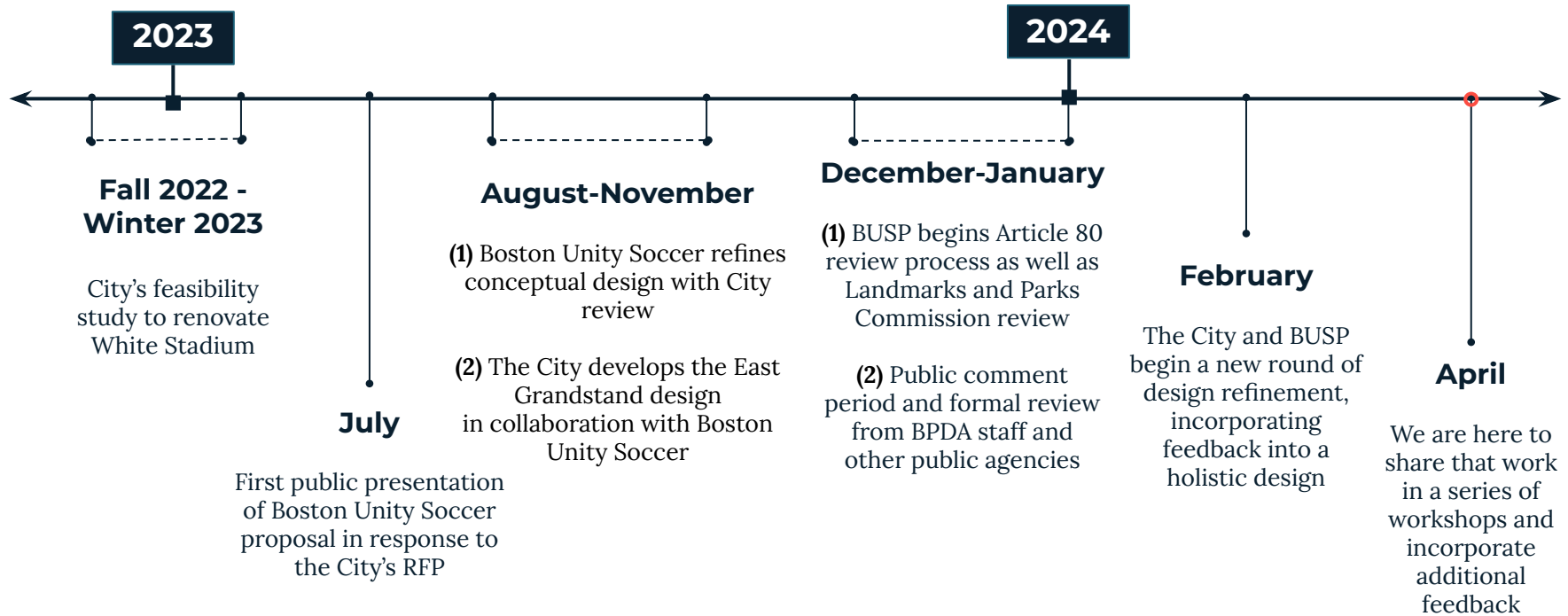
\*Boston Unity Soccer would use <10% of all available field hours.

- Community Events
- BPS Athletics
- Boston Unity
- BPRD Summer Camp

| SUNDAY                    | MONDAY                 | TUESDAY                | WEDNESDAY              | THURSDAY               | FRIDAY                 | SATURDAY               |
|---------------------------|------------------------|------------------------|------------------------|------------------------|------------------------|------------------------|
| 28                        | 29                     | 30                     | 31                     | 1                      | 2                      | 3                      |
| Puerto Rican Festival     | BPRD Summer Camp       | BPRD Summer Camp       | BPRD Summer Camp       | BPRD Summer Camp       | BPRD Summer Camp       | Special Olympics       |
|                           | Summer Conditioning    | Summer Conditioning    | Summer Conditioning    | Summer Conditioning    | Summer Conditioning    | Boston Unity Game      |
|                           | Track & Field          | Track & Field          | Track & Field          | Track & Field          | Boston Unity Practice  |                        |
| 4                         | 5                      | 6                      | 7                      | 8                      | 9                      | 10                     |
|                           | BPRD Summer Camp       | BPRD Summer Camp       | BPRD Summer Camp       | BPRD Summer Camp       | BPRD Summer Camp       |                        |
|                           | Summer Conditioning    | Summer Conditioning    | Summer Conditioning    | Summer Conditioning    | Summer Conditioning    |                        |
|                           | Track & Field          | Track & Field          | Track & Field          | Track & Field          | Track & Field          |                        |
| 11                        | 12                     | 13                     | 14                     | 15                     | 16                     | 17                     |
|                           | BPRD Summer Camp       | BPRD Summer Camp       | BPRD Summer Camp       | BPRD Summer Camp       | BPRD Summer Camp       | NCAA X Country meet    |
|                           | Summer Conditioning    | Summer Conditioning    | Summer Conditioning    | Summer Conditioning    | Summer Conditioning    | Boston Unity Game      |
|                           | Track & Field          | Track & Field          | Track & Field          | Track & Field          | Boston Unity Practice  |                        |
| 18                        | 19                     | 20                     | 21                     | 22                     | 23                     | 24                     |
| Caribbean Kiddie Festival | BPRD Summer Camp       | BPRD Summer Camp       | BPRD Summer Camp       | BPRD Summer Camp       | BPRD Summer Camp       |                        |
|                           | Summer Conditioning    | Summer Conditioning    | Summer Conditioning    | Summer Conditioning    | Summer Conditioning    |                        |
|                           | Track & Field          | Track & Field          | Track & Field          | Track & Field          | Track & Field          |                        |
| 25                        | 26                     | 27                     | 28                     | 29                     | 30                     | 31                     |
|                           | Cheerleading Practice  | Cheerleading Practice  | Cheerleading Practice  | Cheerleading Practice  | Cross Country Practice | Track & Field practice |
|                           | Cross Country Practice | Cross Country Practice | Cross Country Practice | Cross Country Practice | Soccer Practice        | Boston Unity Game      |
|                           | Soccer Game            | Soccer Practice        | Soccer Practice        | Soccer Practice        | Boston Unity Practice  |                        |

# WHERE WE'VE BEEN

## Design Work to Date



# WHAT WE HAVE HEARD

---

## Overall Feedback

### Transportation

Presented updated and refined transportation plans on April 9th and 10th.

Feedback will be incorporated into IAG presentation on May 15th.

The final plan will be memorialized in the TAPA.

### Quality of Life

BUSPs commitments regarding sound and lighting minimization, cleanup, security etc will be memorialized in the Cooperation Agreement.

The terms of the Cooperation Agreement will be shared with the IAG for review before BPDA board approval.

### Community Benefits

The City and BUSP are committed to robust community benefits.

These will be memorialized in the Cooperation Agreement.

### Governance

The City is exploring governance structures aligned with the Franklin Park Action Plan's recommendations and neighborhood concerns.

We look forward to sharing soon.

# WHAT WE HAVE HEARD

---

## Values for White Stadium Design

Overall, the City must demonstrate the entire project conforms with the Franklin Park Action Plan.

### **Supports Park ecology**

- Integrate landscaping, tree planting, and pathways around the stadium into the surrounding park
- Make investments in tree planting, invasive removal, native species, and environment for wildlife, ensuring ecological continuity with the surrounding landscape.
- Respect the importance of preserving wildlife habitats, maintaining the park's serenity, and ensuring that construction and renovations do not harm the environment.

### **Respect the current Park experience**

- Respect important and historic views
- Limit additional paving and hardscape outside the stadium
- Minimize new structures built in the Park
- Respect Olmsted's vision for Franklin Park

### **Create new resources to benefit Park users**

- Eliminate redundancies between the Grove and Overlook
- Take advantage of this project to reopen land to the Playstead
- Establish program opportunities that support the overall park and community experience



# OUR PURPOSE

---

We have designed this workshop series to thoughtfully integrate this feedback into a unified stadium design:

## Design Meeting 1 - Today

Align on design principles for the White Stadium project that support the values and goals identified in the Franklin Park Action Plan and respect the significance of the overall park.

## Design Meeting 2 - May 8

Provide a detailed breakdown of the Boston Public Schools, Boston Unity, and Community program.

Exhibit architectural test-fits and site considerations that accommodate desired programs.

Establish the building blocks of the new design.

## Design Meeting 3 - May 22

Establish a cohesive vision for how program and design principles can inform the new White Stadium Design.

Establish a new path forward that incorporates community feedback received to date.





**B**

# FRANKLIN PARK

The Franklin Park Action Plan &  
White Stadium



 **Franklin  
Park  
Action  
Plan**

**CITY of BOSTON**



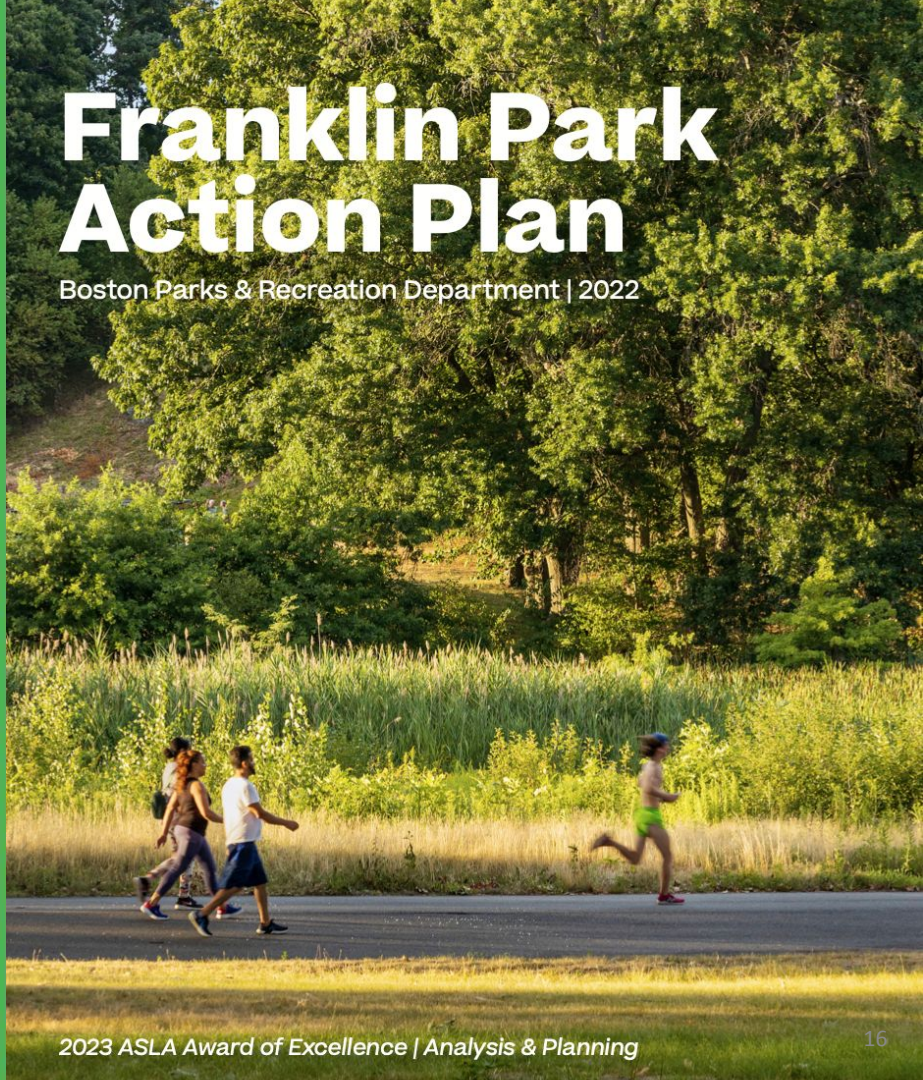
**REED-HILDERBRAND Agency MASS.**

**Franklin Park Action Plan**

Boston Parks & Recreation Department | 2022

# Franklin Park Action Plan

Boston Parks & Recreation Department | 2022



2023 ASLA Award of Excellence | Analysis & Planning



# FRANKLIN PARK ACTION PLAN

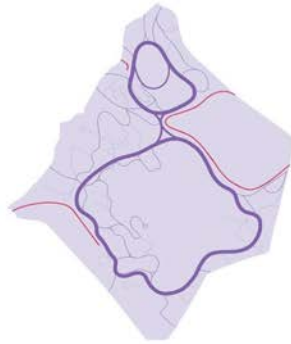
## Primary Plan Recommendations



### MAKE CONNECTIONS & ACTIVATE EDGES

#### WHAT WE HEARD:

- **Improve and clarify entrances** with new paths and signage and managed vegetation
- **Entrance activities at the edge** of the park, close to the neighborhoods



### CLARIFY MOVEMENT

#### WHAT WE HEARD:

- Provide a continuous bike & pedestrian **Circuit Loop**
- **Improve paths** or trails and directional **signage**



### AMPLIFY MAGNET DESTINATIONS

#### WHAT WE HEARD:

- **Address basic needs** like restrooms, lighting, water fountains, and directional and informational signs
- Renewal of **The Overlook** and the **Elma Lewis Playhouse**
- Renewal of the park's main entrance at **Peabody Circle**
- Future use for **The Bear Dens**



### UNIFY THE PARK

#### WHAT WE HEARD:

- Apply a **consistent standard of care** that maintains the park's varied landscapes at a high level for safe and sustained use and **ecological health**
- Better incorporate adjacent facilities, like White Stadium, by **rethinking fences, barriers, removing dense vegetation or seeking collaborative programs**
- Increase **habitat and diversity** throughout the park



### BUILD CAPACITY & ENABLE CHANGE

# FRANKLIN PARK ACTION PLAN

## Implementation

This plan represents the **largest investment** in Franklin Park in over 50 years and 4 mayoral administrations.

### MANAGEMENT

#### PARK OPERATIONS

- **New Full time Park Administrator** to ensure proper coordination, planning, and communication across all aspects of the park and its users.
- **MOU** with Boston Unity Soccer Partners will address management considerations that may fall outside the Lease terms.

### MAINTENANCE

#### FRANKLIN PARK TRUST

- Glen Road Resurfacing
- Invasive plant removal
- Cobble gutter and drain cleaning
- Wilderness picnic grove rehabilitation
- Overlook stairs resetting & repointing

#### CITY OF BOSTON FY25 OPERATING FUNDS

- Adds **6 new maintenance staff dedicated to Franklin Park**
- Expands the maintenance crew
- Establishes a natural areas crew for woodlands management

### CAPITAL INVESTMENTS

#### PARK IMPROVEMENT PROJECTS

Underway:

- Bear Dens Stabilization Project
- Overlook Programming and Design Study

FY25 Recommended Budget:

- Shattuck area tennis court expansion - design
- Circuit Drive safety and drainage improvements - design
- Peabody Circle coordination with Columbia Rd. and Blue Hill Ave. transportation projects.

# FRANKLIN PARK ACTION PLAN

## The Playstead

### 5 KEY IMPROVEMENT AREAS

1. **The Bear Dens** (pg. 308-9): restore for multi-purpose use.
2. **Long Crouch Woods** (pg. 306-7): perform invasive removals & add new planting, improved trails, & new nature play areas.
3. **White Stadium** (pg. 312-3): make improvements for shared community & Boston Public Schools use.
4. **The Overlook** (pg. 302-5): restore The Overlook ruins; return The Elma Lewis Playhouse to its historic location with a new stage, restrooms, and seating.
5. **The Playstead Fields and Tailgate Edge:** upgrade the fields (including drainage/stormwater improvements), create the tailgate edge, improve parking, and establish a new Playstead Loop path for bikes and pedestrians (including seating, lighting, and planting).



# FRANKLIN PARK ACTION PLAN

---

## The Playstead



The Action Plan is the foundation on which projects build - it provides the context so that projects don't move forward in isolation.

- Each project requires that we form an understanding of how to approach the work within the historic landscape.
- Implementation will be incremental - no one project is responsible for delivering the whole vision of the Action Plan.





# DESIGN PRINCIPLES

## White Stadium Design Principles

# FRANKLIN PARK

## Past, Present & Future



Olmsted's General Plan, 1896



Existing Conditions



Franklin Park Action Plan

# THE PLAYSTEAD

## History & Intent



1896 Olmsted General Plan for Franklin Park

# THE PLAYSTEAD

---

## History & Intent



The Playstead, Early 1900s



# THE PLAYSTEAD

---

## Evolving Significance



The Playstead, 1905



Bike Race, 1937



Elma Lewis Playhouse in the Park, 1970s



Third World Liberation Walk, 1971



Kite Festival, 2019



Elma Lewis Playhouse, 2022

# THE PLAYSTEAD

---

## Evolving Significance



Uptown in the Park, 1970



Hues Corporation Concert, 1974

# SECRETARY OF INTERIOR'S STANDARDS

---

## Federal Guidelines for the Treatment of Cultural Landscapes

These guidelines promote responsible preservation practices that help protect cultural resources.

### PRESERVATION

- Requires retention of the greatest amount of historic fabric, including the landscape's historic form, features, and details as they have evolved over time

### REHABILITATION

- Acknowledges the need to alter or add to a cultural landscape to meet continuing or new uses while retaining the landscape's historic character

### RECONSTRUCTION

- Establishes a framework for re-creating a vanished or non-surviving landscape with new materials, primarily for interpretive purposes

### RESTORATION

- Allows for the depiction of a landscape at a particular time in its history by preserving materials from the period of significance and removing materials from other periods

# THE PLAYSTEAD - CHARACTER DEFINING FEATURES

Drumlin Topography & Puddingstone Outcrops

Open Expanse of the Valley Floor Affording Long Views & Accommodating Flexible Use



- HIGH LOW
- ELEVATION CHANGE
- EDGES OF VALLEY
- IMPORTANT VIEWS
- IMPORTANT VISUAL AND SPATIAL CONNECTIONS



# THE PLAYSTEAD - CHARACTER DEFINING FEATURES

Oak/Hickory Woodlands, and Informal Groves of Canopy Trees Shading Circulation



Olmsted's Original Intent



Existing Condition



Canopy Following Circulation



Informal Groves



# SECRETARY OF INTERIOR'S STANDARDS

---

## Federal Guidelines for the Treatment of Cultural Landscapes

These guidelines promote responsible preservation practices that help protect cultural resources.

### PRESERVATION

- Requires retention of the greatest amount of historic fabric, including the landscape's historic form, features, and details as they have evolved over time

### REHABILITATION

- Acknowledges the need to alter or add to a cultural landscape to meet continuing or new uses while retaining the landscape's historic character

### RECONSTRUCTION

- Establishes a framework for re-creating a vanished or non-surviving landscape with new materials, primarily for interpretive purposes

### RESTORATION

- Allows for the depiction of a landscape at a particular time in its history by preserving materials from the period of significance and removing materials from other periods

# WHITE STADIUM DESIGN PRINCIPLES

## Looking Forward - Managing and Designing Change

### Protect Historic Arrangement of The Playstead

- 1 Preserve, protect, and reinforce the continuity of the topographic conditions that structured Olmsted's spatial configuration of The Playstead
- 2 All new work associated with the stadium project should avoid, minimize, and mitigate any adverse effects of the overarching visual and spatial relationships within the park and with surrounding communities.



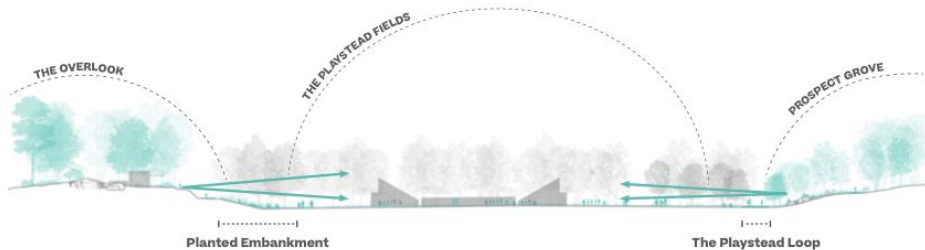
# WHITE STADIUM DESIGN PRINCIPLES

## Looking Forward - Managing and Designing Change

### Respect Existing Views & Destinations

**3** Maintain the spatial relationship between the key promontories (The Overlook, zoo, tailgate edge, and views from Long Crouch Woods) arranged around an open center, each demanding its own space while being responsive to the others. New destinations should be set within the perimeter of The Playstead, each with their own “address” along the edge un-encroached by and respecting the others from 360° (i.e. multi sided-ness).

#### OVERLOOKING THE CENTRAL FIELDS





# WHITE STADIUM DESIGN PRINCIPLES

---

## Looking Forward - Managing and Designing Change

### Minimize Impacts of the Stadium Building Volume

**4** Approach the design of the stadium as one structure whose scale, architectural character, and coherence will have significant impact on the larger Playstead, and avoid introducing elements that may constrain the reuse and reinstatement of the Overlook Terrace as the central built feature.

**5** Acknowledge that The Overlook Shelter was the only building that Olmsted introduced into The Playstead. All future architectural interventions must be deferential to the larger landscape and responsive to its visual and spatial constructs.



# WHITE STADIUM DESIGN PRINCIPLES

---

## Looking Forward - Managing and Designing Change

### Restore Visual & Physical Continuity

- 6 Remove visual and physical barriers to establish shared public access to the stadium (in coordination with Boston Public Schools and Boston Unity Soccer) and reinstate the important visual and spatial continuity and connectivity with the larger park landscape and across the fields.



# WHITE STADIUM DESIGN PRINCIPLES

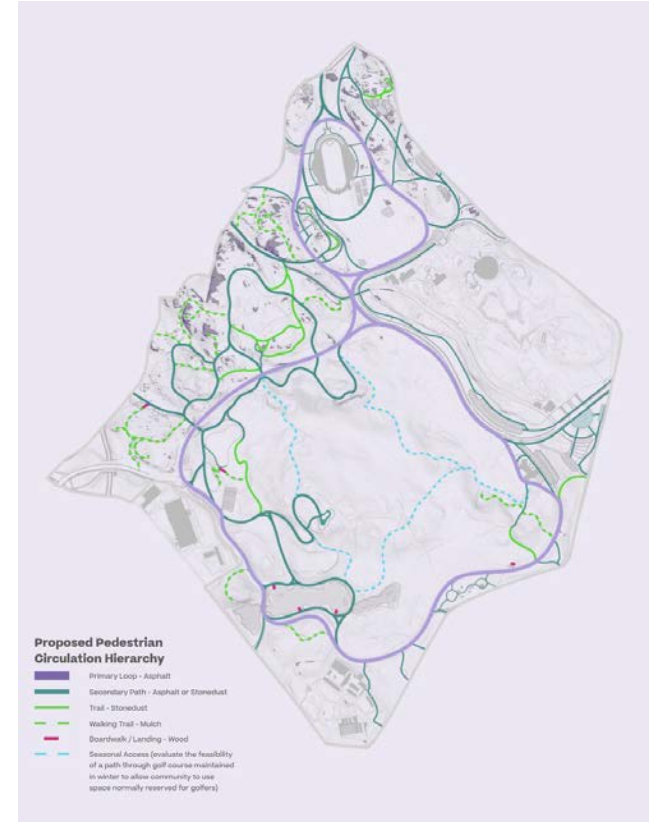
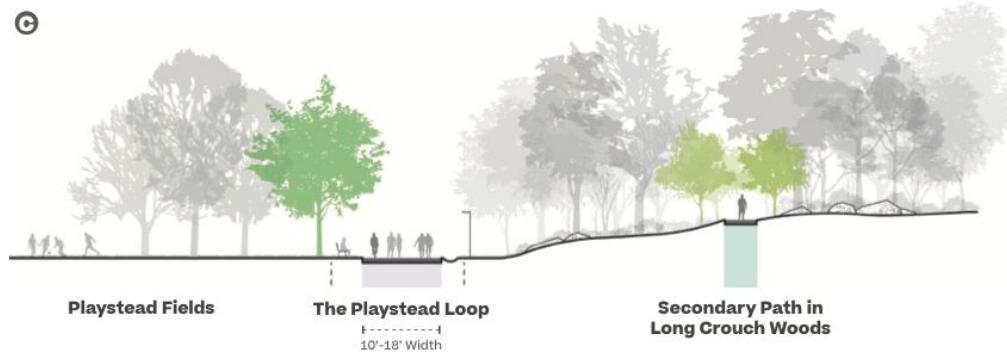
## Looking Forward - Managing and Designing Change

### Prioritize Pedestrian Safety & Comfort

**7** Promote freedom of pedestrian movement by supporting and clarifying the continuity of the park circulation system, whose alignment and width harmonizes with the topography and accommodates different uses (pedestrian and bikes), and is supported by canopy for human comfort.

#### THE PLAYSTEAD LOOP

©

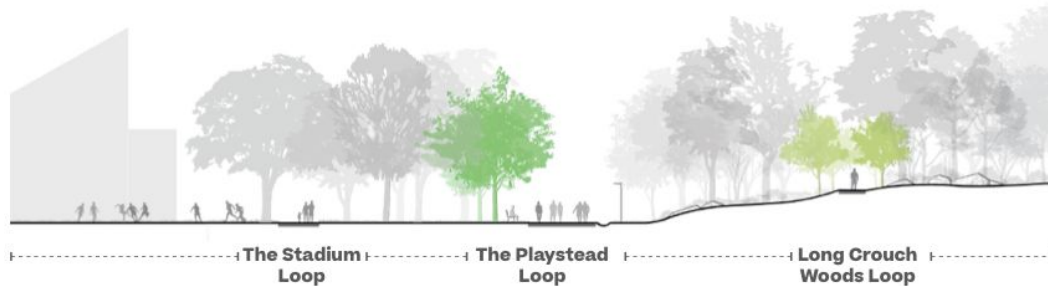


# WHITE STADIUM DESIGN PRINCIPLES

## Looking Forward - Managing and Designing Change

### Enhance Existing Canopy & Start the Next Generation

**8** Protect existing heritage and legacy trees, remove invasives, and plant new trees as the next generation of canopy; use informal groves of canopy trees to reinforce primary circulation while maintaining continuity of the larger open center of The Playstead.





# Discussion & Feedback

Miro Exercise

# DESIGN PRINCIPLES FEEDBACK

## Design Principles Exercise in Miro

### PROTECT HISTORIC ARRANGEMENT OF THE PLAYSTEAD

#### WHITE STADIUM DESIGN PRINCIPLES

Looking Forward - Managing and Designing Change

##### Protect Historic Arrangement of The Playstead

- 1 Preserve, protect, and reinforce the continuity of the topographic conditions that structured Olmsted's spatial configuration of The Playstead
- 2 All new work associated with the stadium project should avoid, minimize, and mitigate any adverse effects of the overarching visual and spatial relationships within the park and with surrounding communities.



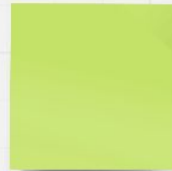
### MINIMIZE IMPACTS OF THE STADIUM VOLUME

#### WHITE STADIUM DESIGN PRINCIPLES

Looking Forward - Managing and Designing Change

##### Minimize Impacts of the Stadium Volume

- 4 Approach the design of the stadium as one structure whose scale, architectural character, and coherence will have significant impact on the larger Playstead, and avoid introducing elements that may constrain the reuse and reinstatement of the Overlook Terrace as the central built feature.
- 5 Acknowledge that The Overlook Shelter was the only building that Olmsted introduced into The Playstead. Require all future architectural interventions to be deferential to the larger landscape and responsive to its visual and spatial constructs.



MIRO



Public Facilities



boston planning & development agency

CITY of BOSTON

Mayor Michelle Wu



# DESIGN EVOLUTION

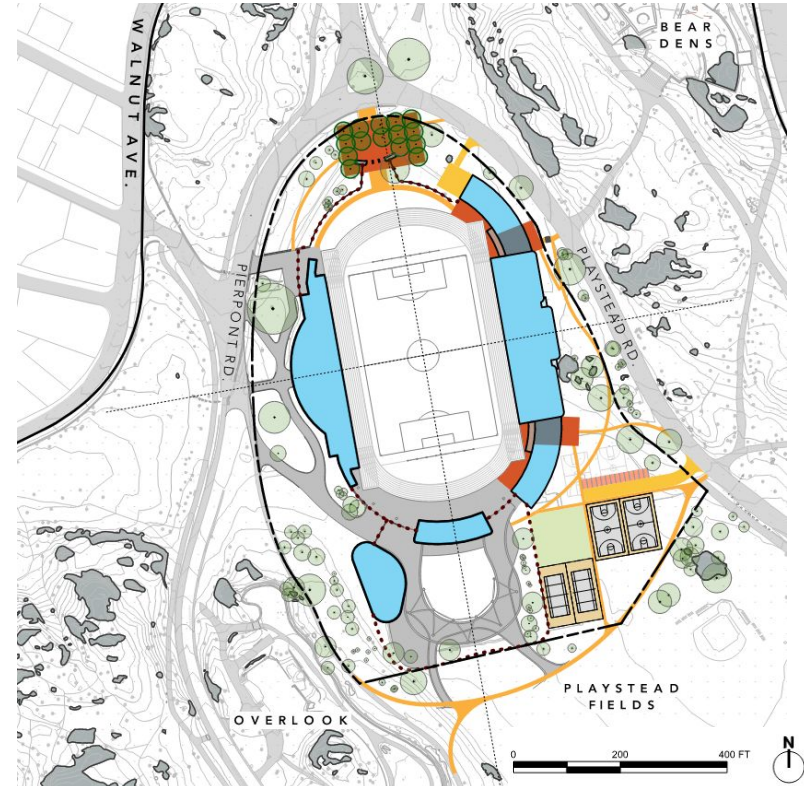
Refining the White Stadium Design

# WHERE WE WERE LAST TIME - FEB. 12, 2024

Previous Design



Site Axon

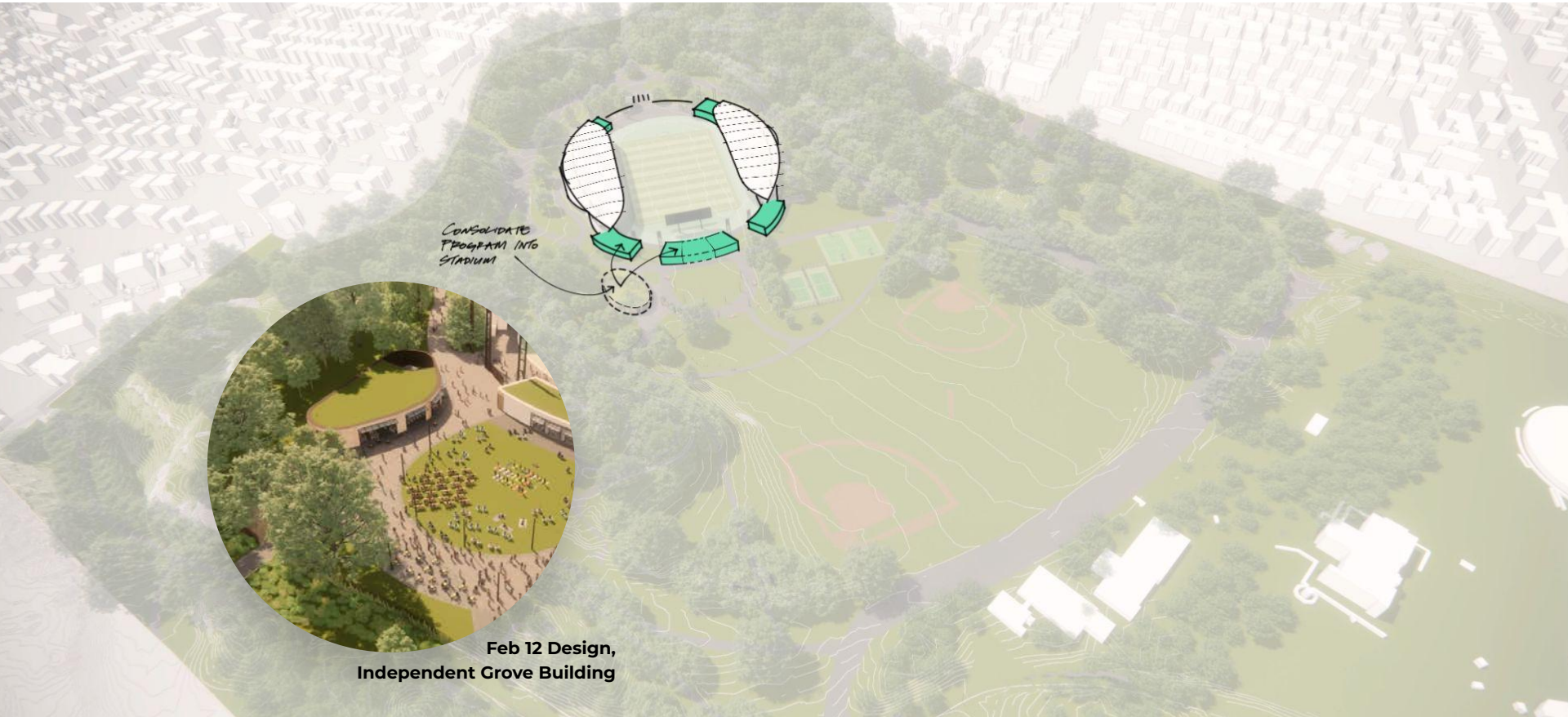


Site Plan



# DESIGN EVOLUTION

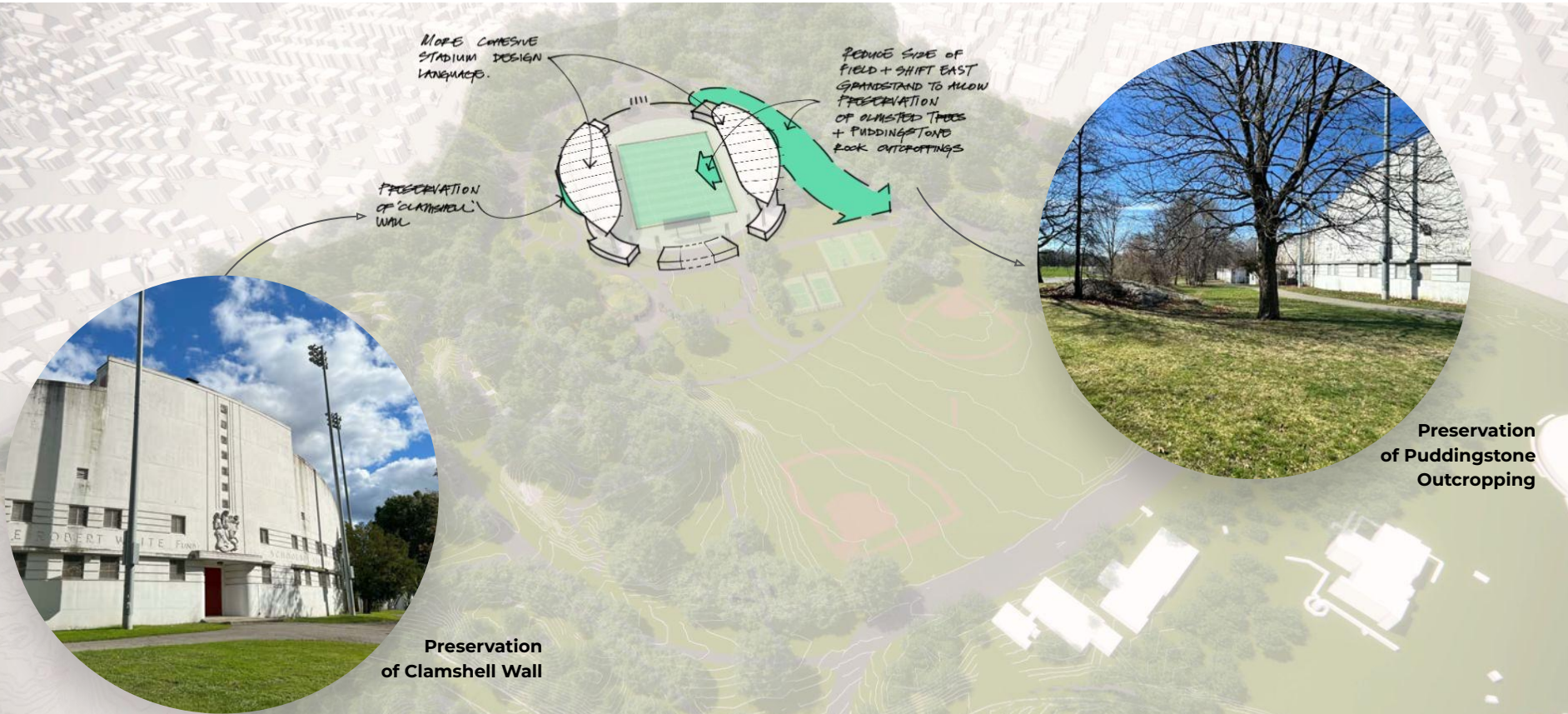
## Minimize Impacts of the Stadium Volume



Feb 12 Design,  
Independent Grove Building

# DESIGN EVOLUTION

## Minimize Impacts of the Stadium Volume



**Preservation of Clamshell Wall**

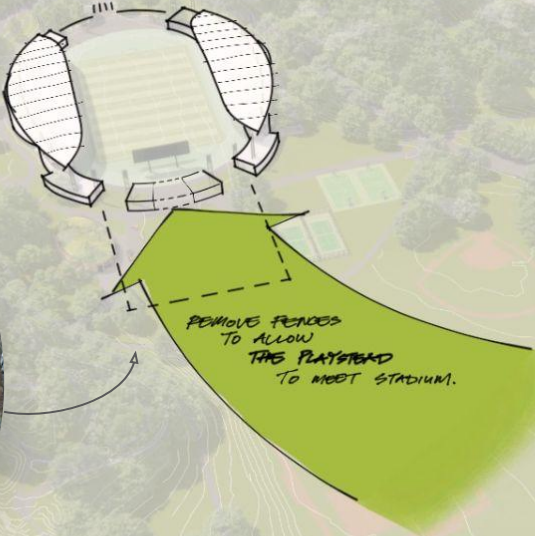
**Preservation of Puddingstone Outcropping**

# DESIGN EVOLUTION

## Restore Visual & Physical Continuity



Remove Existing Fence Surrounding Future Grove



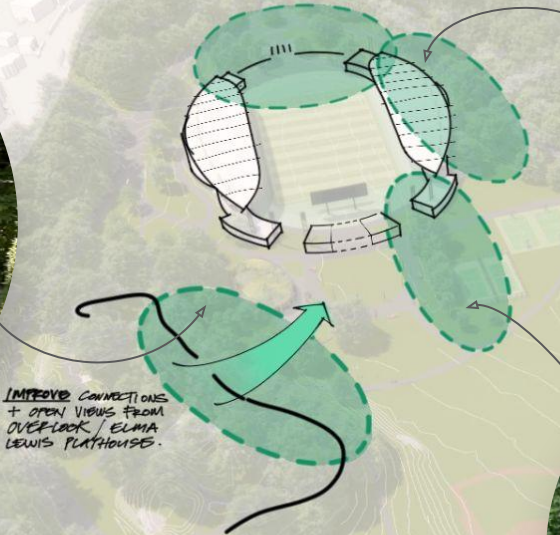
Feb 12 Design, Grove with Fence Perimeter

# DESIGN EVOLUTION

Enhance Existing Canopy & Start the Next Generation



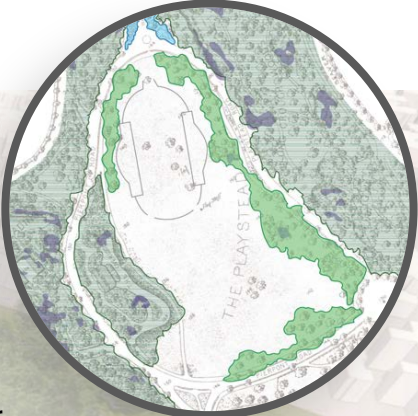
Existing View from Overlook with Overgrown Vegetation



IMPROVE CONNECTIONS + OPEN VIEWS FROM OVERLOOK / ELMA LEWIS PLATHOUSE.



Volunteer Trees at Future Grove



Original Park Tree Canopy, Figure Extract from FPAP



Volunteer Trees at Stadium Wall

# DESIGN EVOLUTION

## Prioritize Pedestrian Safety & Comfort



Example of Confusing Existing Circulation

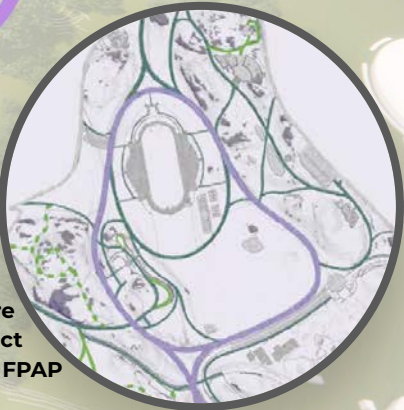
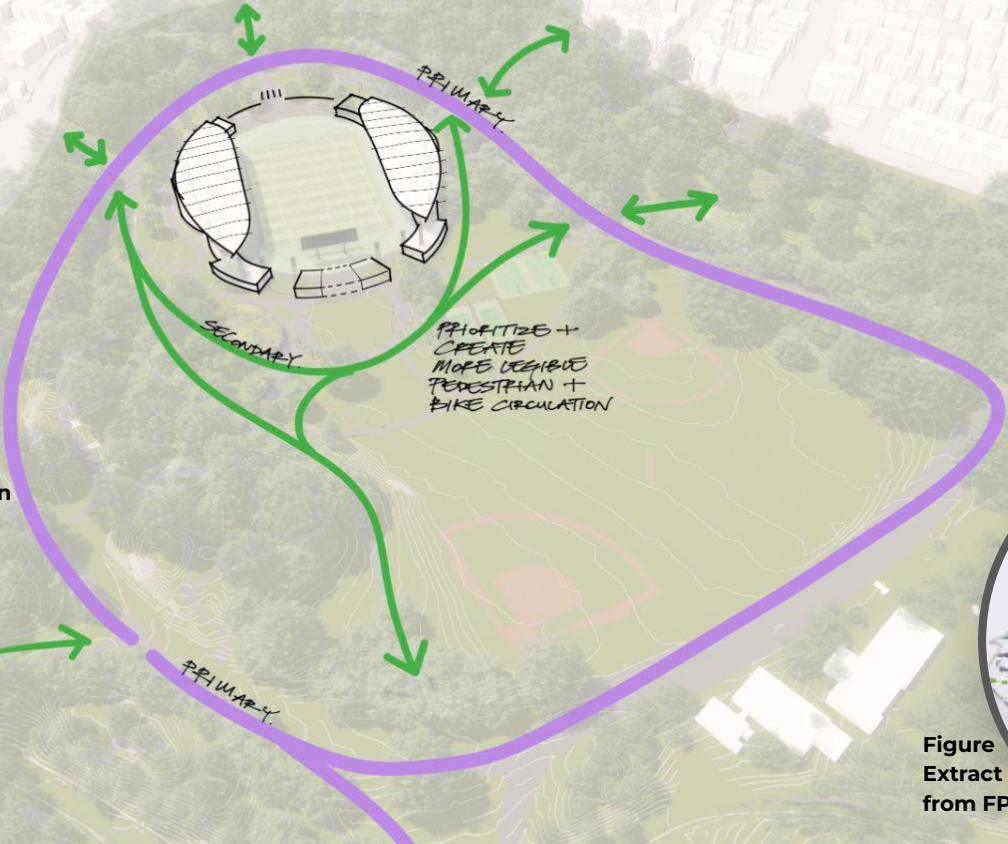


Figure Extract from FPAP



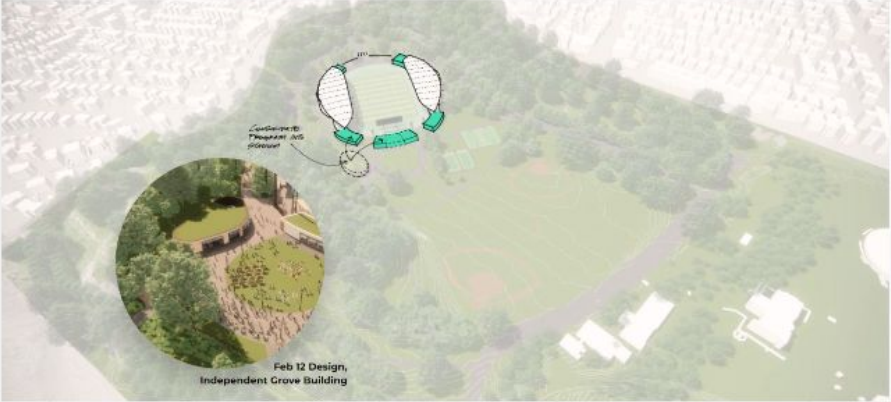
# Discussion & Feedback

Miro Exercise

# DISCUSSION & FEEDBACK

## Question & Answer

Restore Visual & Physical Continuity





**B**



**NEXT STEPS**



# NEXT STEPS

---

## Design Updates

To ensure the design aligns with community feedback and reflects the guidelines in the Franklin Park Action Plan, we will host design meetings from April to May to share and gather feedback on the revised design, which prioritizes the following principles:

- Removing visual and physical barriers between the stadium and the Playstead
- Respecting and uplifting the Overlook and Elma Lewis Playhouse
- Recognizing the value of existing cultural assets and the cultural landscape
- Supporting and clarifying pedestrian circulation within the park
- Preserving important views
- Honoring Olmsted's and Community legacy



# NEXT STEPS

---

## Upcoming Community Meetings

- Advancing the Design: A series of meetings to advance a holistic stadium design in line with past community feedback and guidelines from the Franklin Park Action Plan.
  - Design Meeting 1: April 25
  - Design Meeting 2: May 8
  - Design Meeting 3: May 22
- IAG meetings continue
  - IAG Meeting #2: May 15, focusing on transportation
  - IAG Meeting #3: June 5, focusing on community benefits
- Landmarks Commission Subcommittee meetings continue
- Parks Commission review committee (May introduction)



# OUR ENGAGEMENT SCHEDULE

## WHITE STADIUM VIRTUAL COMMUNITY ENGAGEMENT SCHEDULE

### NEIGHBORHOOD TRANSPORTATION WORKSHOP

Roxbury | Tues, Apr 9 | 6-7:30 p.m.  
Dorchester | Wed, Apr 10 | 6-7:30 p.m.  
Jamaica Plain | Wed, Apr 10 | 7:30-9:00 p.m.

### DESIGN MEETINGS


Meeting #1: Design Principles | Thurs, Apr 25 | 6-7 :30 p.m.  
Meeting #2: Revised Principles, Program & Usage Needs |  
Wed, May 8 | 6-7:30 p.m.  
Meeting #3: Final Design: Bringing Principles, Program & Usage  
Needs Together | Wed, May 22 | 6-7:30 p.m.

### IAG MEETINGS

Meeting #2: Design Process & Transportation | Wed, May 15 | 6-7:30 p.m.  
Meeting #3: Community Benefits | Wed, Jun 5 | 6-7:30 p.m.

Learn more and register

[boston.gov/white-stadium](https://boston.gov/white-stadium)

CITY of BOSTON  City of Boston  
Community  
Engagement



# NEXT STEPS

---

## Article 80 Review Continues

- Request for Supplemental Information issued: April 19
- IAG meetings continue
  - IAG Meeting #2: May 15, focusing on transportation
  - IAG Meeting #3: June 5, focusing on community benefits
- The new comment period end date will be determined once Boston Unity Soccer has submitted the Supplemental Information Response.





**B**

# GENERAL Q & A